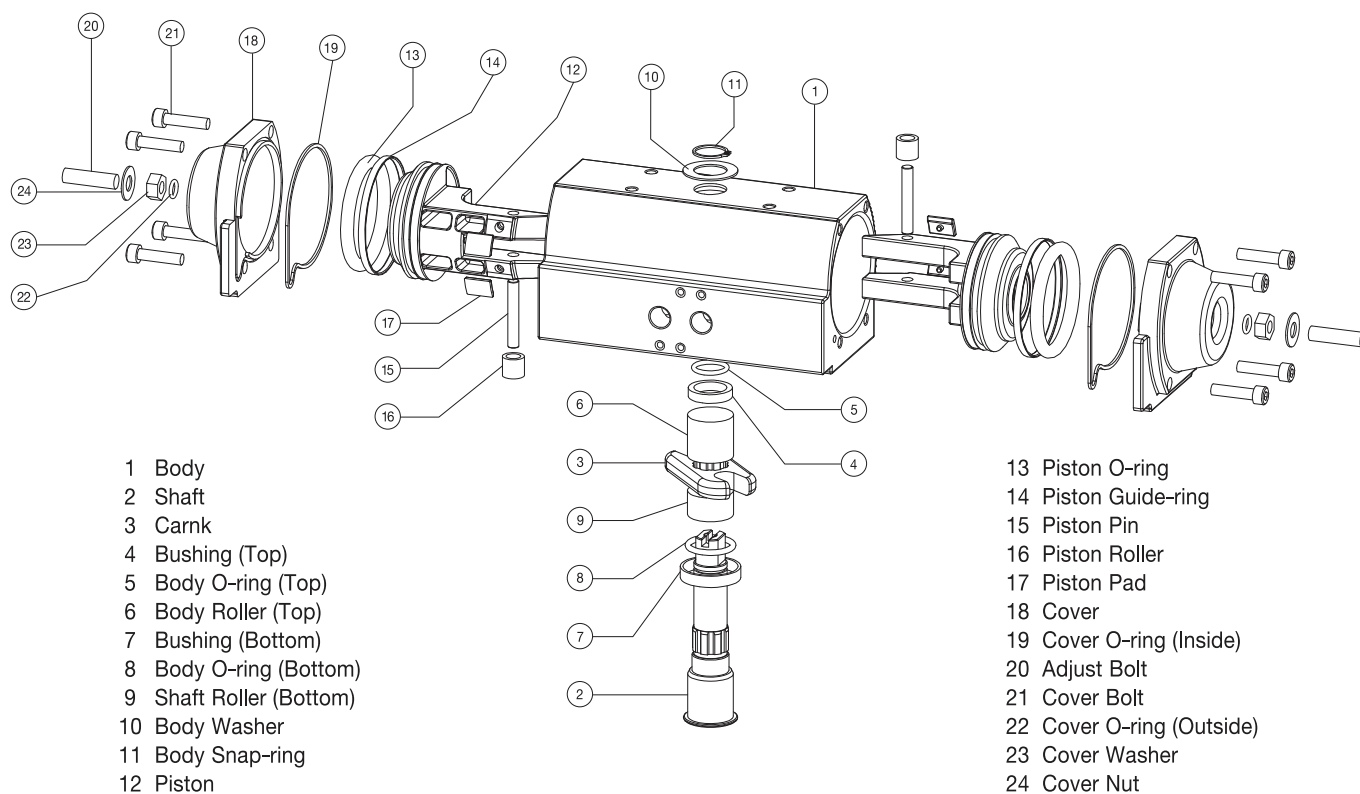


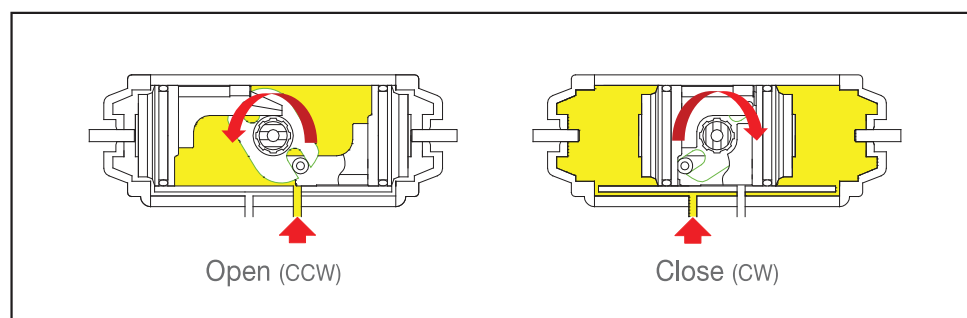
# SD SERIES - S cotch yoke / D ouble acting 拔叉式 / 双动

## Part List

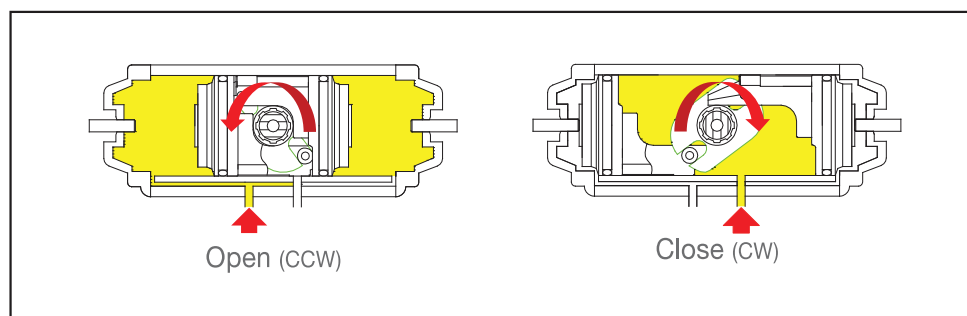


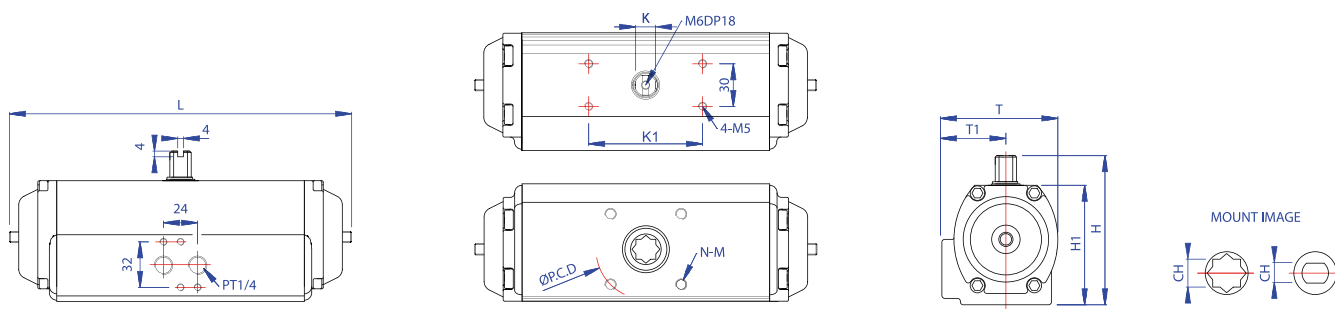
## Operating Mechanism

Fail Close



Fail Open





unit : mm

Dimension Table	
Ball Valve (10k)	
SD50	15A ~ 25A
SD65	32A ~ 50A
SD80	65A ~ 80A
SD100	100A
SD125	125A
SD140	150A
SD160	200A
SD210	250A

MODEL	ISO	L	T	T1	H	H1	K	K1	CH	P.C.D (ø)	N-M	DEPTH	WG(Kg)
SD50	F03/F05/F07	188	69	40	87	67	11	80	11 x 11 9,7 x ø15	36/50/70	4-M5/M6/M8	13 14	1,5
SD65	F05/F07	234	83	46	106	86	13	80	14 x 14 11,7 x 17 9,7 x ø15	50/70	4-M6/M8	17 17 15	2,5
SD80	F07	286	98	54	122,5	103	15	80	17 x 17 14,7 x 19,5	70	4-M8	19 20	4
SD100	F07/F10	344	116,5	61,5	143	122,5	22	80	22 x 22 19,7 x ø28 17,7 x ø22	70/102	4-M8/M10	26 27 27	7
SD125	F07/F10	443	137	68,5	168	148	22	80	22 x 22	70/102	4-M8/M10	26	11
SD140	F10/F12	486	154	77	190	170	22	80	27 x 27 22 x 22 19 x 19	102/125	4-M10/M12	30	18
SD160	F14 F10/F12	560	176	88	210	190	32	80	36 x 36 27 x 27	140 102/125	4-M16 4-M10/M12	30	25
SD210	F16	620	230	112	290	261	36	130	46 x 46 36 x 36	165	4-M20	60 50	44,5

Selection Guide

Torque Table	
Butterfly Valve (10k)	
SD50	40A ~ 65A
SD65	80A ~ 100A
SD80	125A ~ 150A
SD100	200A ~ 250A
SD125	300A
SD140	350A
SD160	400A ~ 450A
SD210	500A ~ 600A

Selection Guide

MODEL	ANGLE	SUPPLY AIR									
		3Bar		4Bar		4,5Bar		5Bar		6Bar	
		Air to Close	Air to Open	Air to Close	Air to Open	Air to Close	Air to Open	Air to Close	Air to Open	Air to Close	Air to Open
SD50	0 °	29,0	21,0	37,0	28,0	37,5	32,5	38,0	37,0	42,0	41,0
	45 °	15,0	16,0	20,0	21,0	22,5	23,5	25,0	26,0	30,0	31,0
	90 °	25,0	25,0	33,0	38,0	36,0	39,0	39,0	40,0	50,0	52,0
SD60	0 °	63,0	59,0	85,0	78,0	95,0	86,5	105,0	95,0	131,0	116,0
	45 °	33,0	38,0	45,0	49,0	51,0	56,0	57,0	63,0	68,0	73,0
	90 °	54,0	52,0	72,0	71,0	80,0	82,0	88,0	93,0	107,0	107,0
SD80	0 °	121,0	105,0	164,0	143,0	160,0	163,0	156,0	183,0	261,0	210,0
	45 °	65,0	69,0	84,0	92,0	98,0	106,5	112,0	121,0	130,0	144,0
	90 °	97,0	101,0	130,0	133,0	150,5	144,5	171,0	156,0	198,0	209,0
SD100	0 °	194,0	186,0	265,0	247,0	298,5	269,5	332,0	292,0	393,0	368,0
	45 °	110,0	127,0	147,0	165,0	166,0	180,5	185,0	196,0	237,0	250,0
	90 °	173,0	179,0	231,0	237,0	264,0	269,0	297,0	301,0	348,0	363,0
SD120	0 °	428,0	432,0	576,0	551,0	650,5	614,5	725,0	678,0	886,9	793,9
	45 °	255,0	273,0	339,0	360,0	382,0	401,5	425,0	443,0	513,0	531,0
	90 °	385,0	375,0	510,0	491,0	572,5	552,0	635,0	613,0	750,0	732,0
SD140	0 °	623,0	576,0	829,9	753,9	967,4	838,4	1104,9	922,9	1310,9	1096,9
	45 °	333,0	331,0	450,0	455,0	514,5	518,5	579,0	582,0	691,0	668,0
	90 °	520,0	523,0	689,0	720,0	775,9	799,9	862,9	879,9	1054,9	969,9
SD160	0 °	952,9	812,9	1146,9	1061,9	1315,9	1186,9	1484,9	1311,9	1799,9	1599,9
	45 °	540,0	569,0	730,0	757,9	824,9	853,4	919,9	948,9	1109,9	1132,9
	90 °	879,9	978,9	1169,9	1319,9	1308,9	1477,4	1447,9	1634,9	1749,9	2026,9
SD210	0 °	1979,9	1909,9	2799,8	2599,8	2939,8	2859,8	3299,8	3199,8	3919,7	3819,7
	45 °	1099,9	1149,9	1459,9	1499,9	1709,9	1749,9	1919,9	1949,9	2299,8	2399,8
	90 °	1669,9	1719,9	2149,9	2299,8	2599,8	2709,8	2799,8	2899,8	3349,8	3449,8

unit : Nm