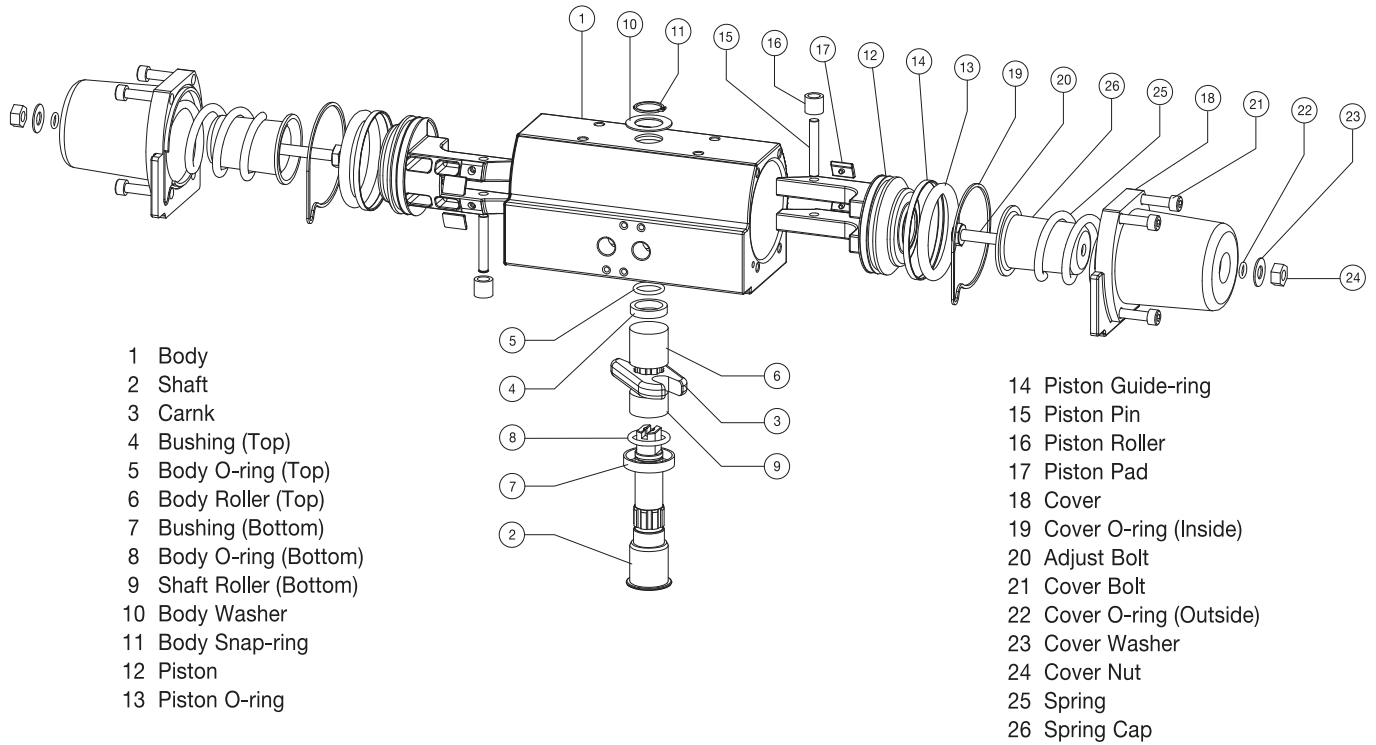


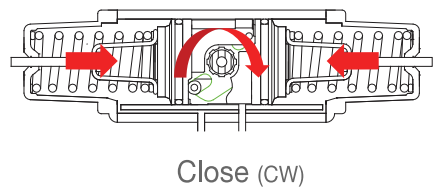
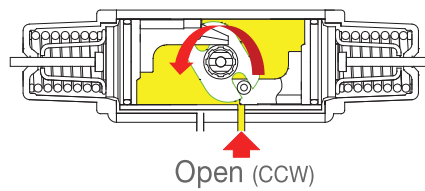
SS SERIES - **S**cotch yoke / **S**pring return 拔叉式/ 单动

Part List

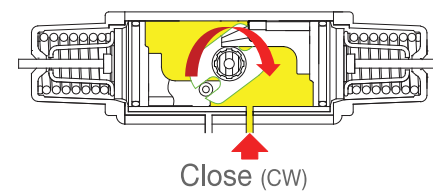
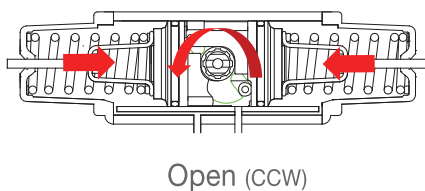


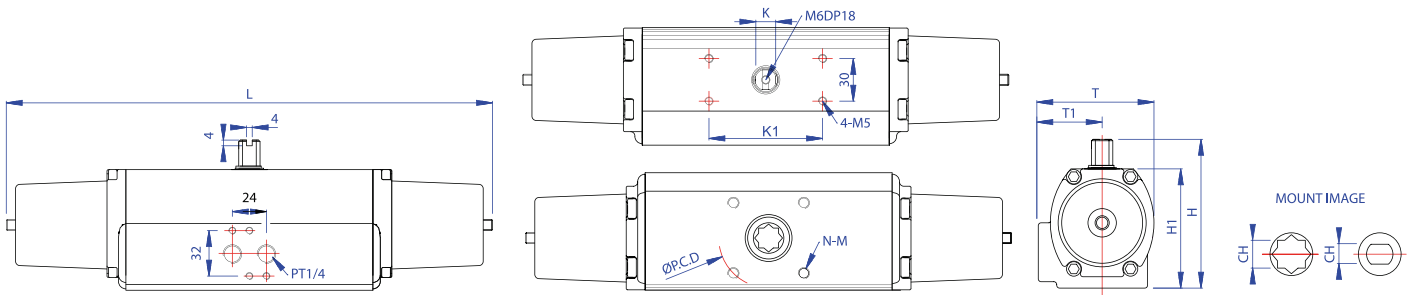
Operating Mechanism

Fail Close



Fail Open





unit:mm

Dimension Table

Ball Valve (10k)	
SS50	15A ~ 25A
SS65	25A ~ 40A
SS80	50A ~ 65A
SS100	80A
SS125	100A
SS140	125A
SS160	150A
SS210	200A

Selection Guide

MODEL	ISO	L	T	T1	H	H1	K	K1	CH	P.C.D (ø)	N-M	DEPTH	WG(Kg)
SS50	F03/F05/F07	258	69	40	87	67	11	80	11 x 11	36/50/70	4-M5/M6/M8	13	1,6
									9,7 x ø15			14	
SS65	F05/F07	320	83	46	106	86	13	80	14 x 14	50/70	4-M6/M8	17	3,2
									11,7 x ø17			17	
									9,7 x ø15			15	
SS80	F07	418	98	54	122,5	103	15	80	17 x 17	70	4-M8	19	5,4
									14,7 x ø19,5			20	
SS100	F07/F10	506	116,5	61,5	143	122,5	22	80	22 x 22	70/102	4-M8/M10	26	10
									19,7 x ø28			27	
									17,7 x ø22			27	
SS125	F07/F10	620	137	60,5	168	148	22	80	22 x 22	70/102	4-M8/M10	26	17
SS140	F10/F12	716	154	77	190	170	22	80	27 x 27	102/125	4-M10/M12	30	24
									22 x 22			30	
									19 x 19			30	
SS160	F14	815	178	88	210	190	32	80	36 x 36	140	4-M16	30	35
	F10/F12								27 x 27	102/125	4-M10/M12	30	
SS210	F16	980	230	112	290	261	36	130	46 x 46	165	4-M20	60	72,5
									36 x 36			50	

unit:Nm

Torque Table

Butterfly Valve (10k)	
SS50	40A ~ 50A
SS65	65A ~ 80A
SS80	100A ~ 125A
SS100	150A ~ 200A
SS125	250A
SS140	300A
SS160	350A ~ 400A
SS210	450A

Selection Guide

MODEL	ANGLE	SPRING TORQUE					
		Weak		Middle		Strong	
		Spring to Close	Air to Open:3Bar	Spring to Close	Air to Open:4,5Bar	Spring to Close	Air to Open:6Bar
SS50	0 °	10,0	20,0	14,0	26,0	17,0	34,0
	45 °	9,0	9,0	12,0	12,0	15,0	15,0
	90 °	20,0	10,0	26,0	14,0	34,0	17,0
SS65	0 °	22,0	39,0	35,0	54,0	48,0	70,0
	45 °	18,0	18,0	23,0	28,0	37,0	32,0
	90 °	39,0	22,0	54,0	35,0	70,0	48,0
SS80	0 °	40,0	70,0	60,0	100,0	80,0	130,0
	45 °	30,0	30,0	50,0	50,0	70,0	70,0
	90 °	70,0	40,0	100,0	60,0	130,0	80,0
SS100	0 °	70,0	140,0	100,0	190,0	130,0	240,0
	45 °	50,0	50,0	80,0	80,0	110,0	110,0
	90 °	140,0	70,0	190,0	100,0	240,0	130,0
SS125	0 °	150,0	250,0	230,0	380,0	300,0	510,0
	45 °	130,0	130,0	190,0	190,0	260,0	260,0
	90 °	250,0	150,0	380,0	230,0	510,0	300,0
SS140	0 °	200,0	370,0	300,0	550,0	410,0	730,0
	45 °	170,0	170,0	290,0	290,0	340,0	340,0
	90 °	370,0	200,0	550,0	300,0	730,0	410,0
SS160	0 °	400,0	540,0	550,0	750,0	769,9	1149,9
	45 °	290,0	290,0	420,0	420,0	560,0	560,0
	90 °	540,0	400,0	750,0	550,0	1149,9	769,9
SS210	0 °	670,0	1199,9	1049,9	1619,9	1419,9	2169,9
	45 °	560,0	560,0	939,9	939,9	1259,9	1259,9
	90 °	1199,9	670,0	1619,9	1049,9	2169,9	1419,9